

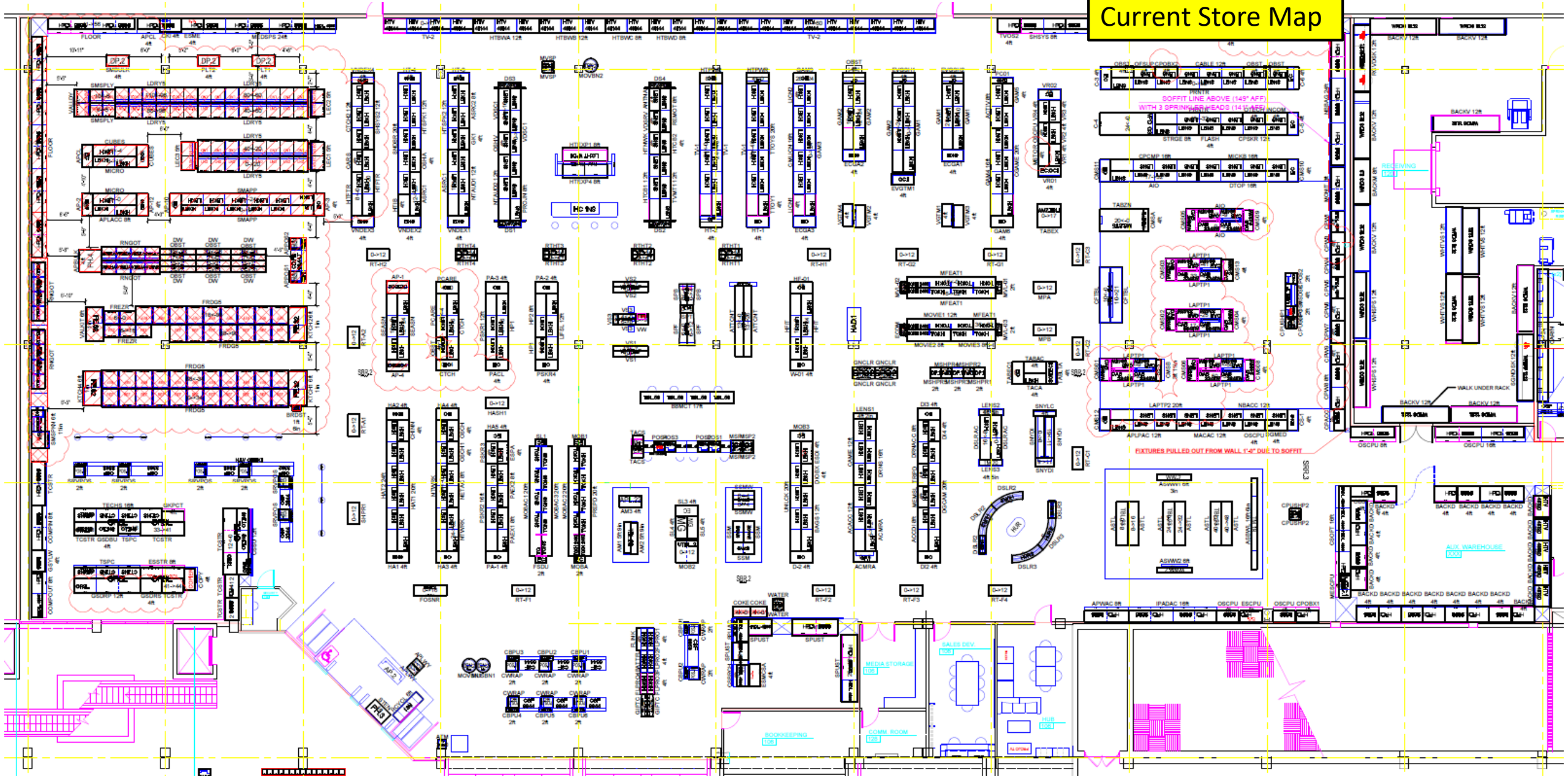
St 276

Pentagon City

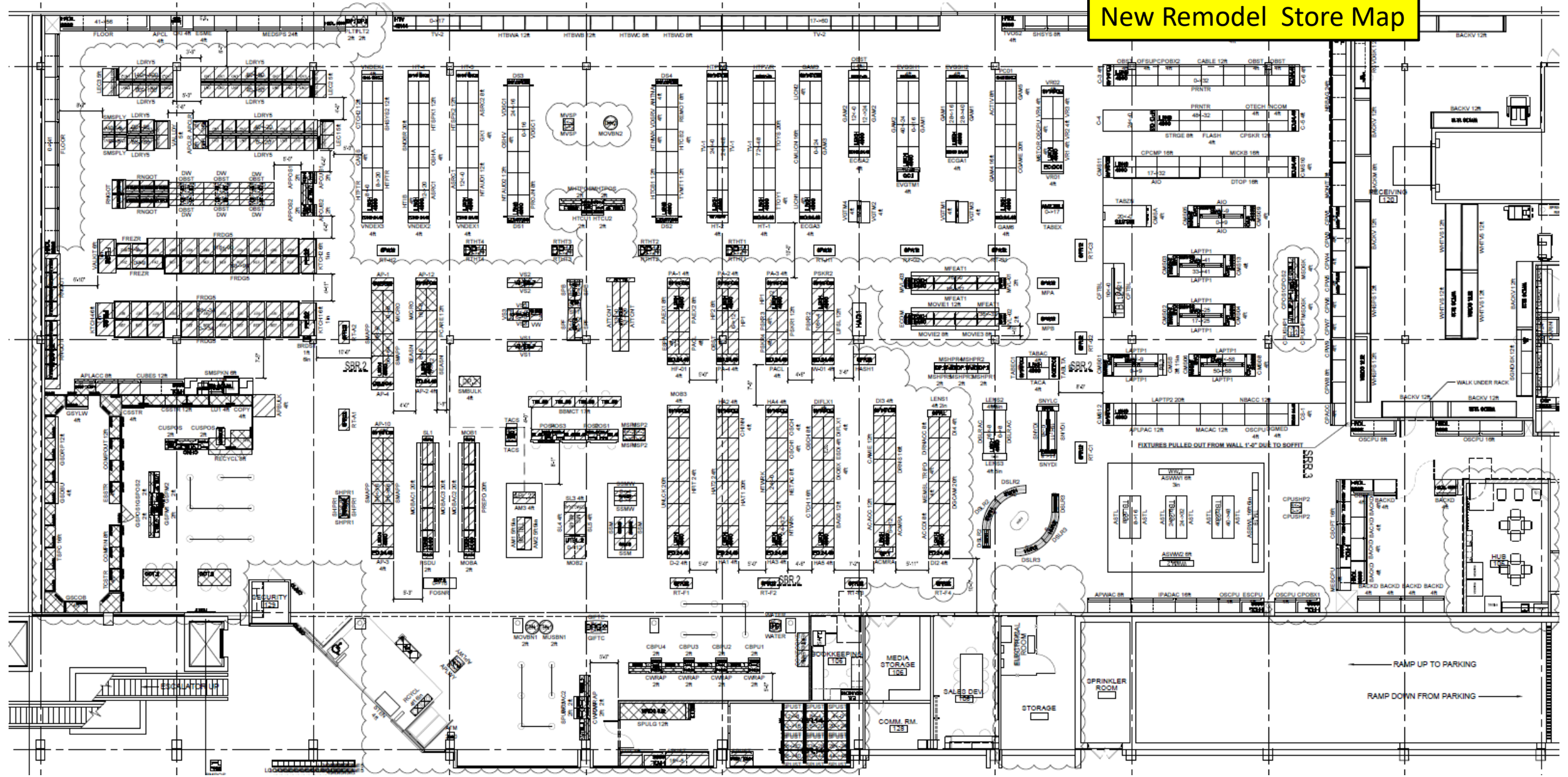
Proposed phasing for FOH Remodel

5 weeks

Current Store Map



New Remodel Store Map



St 276

Pentagon City

Weekly Ceiling Paint Phasing Overview

St 276

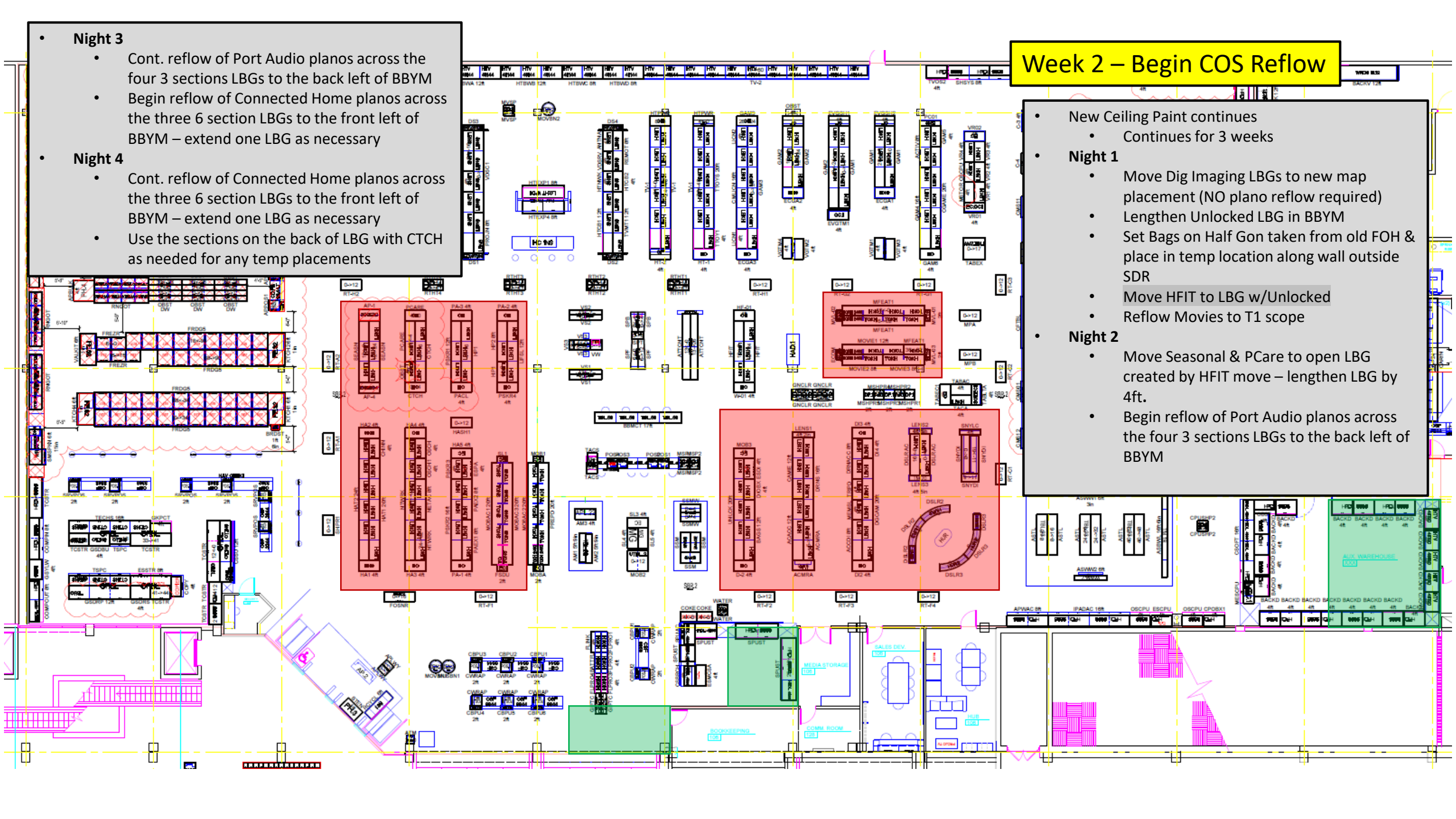
Pentagon City

Weekly Phasing Breakdown - Overview

- **Night 3**
 - Cont. reflow of Port Audio planos across the four 3 section LBGs to the back left of BBYM
 - Begin reflow of Connected Home planos across the three 6 section LBGs to the front left of BBYM – extend one LBG as necessary
- **Night 4**
 - Cont. reflow of Connected Home planos across the three 6 section LBGs to the front left of BBYM – extend one LBG as necessary
 - Use the sections on the back of LBG with CTCH as needed for any temp placements

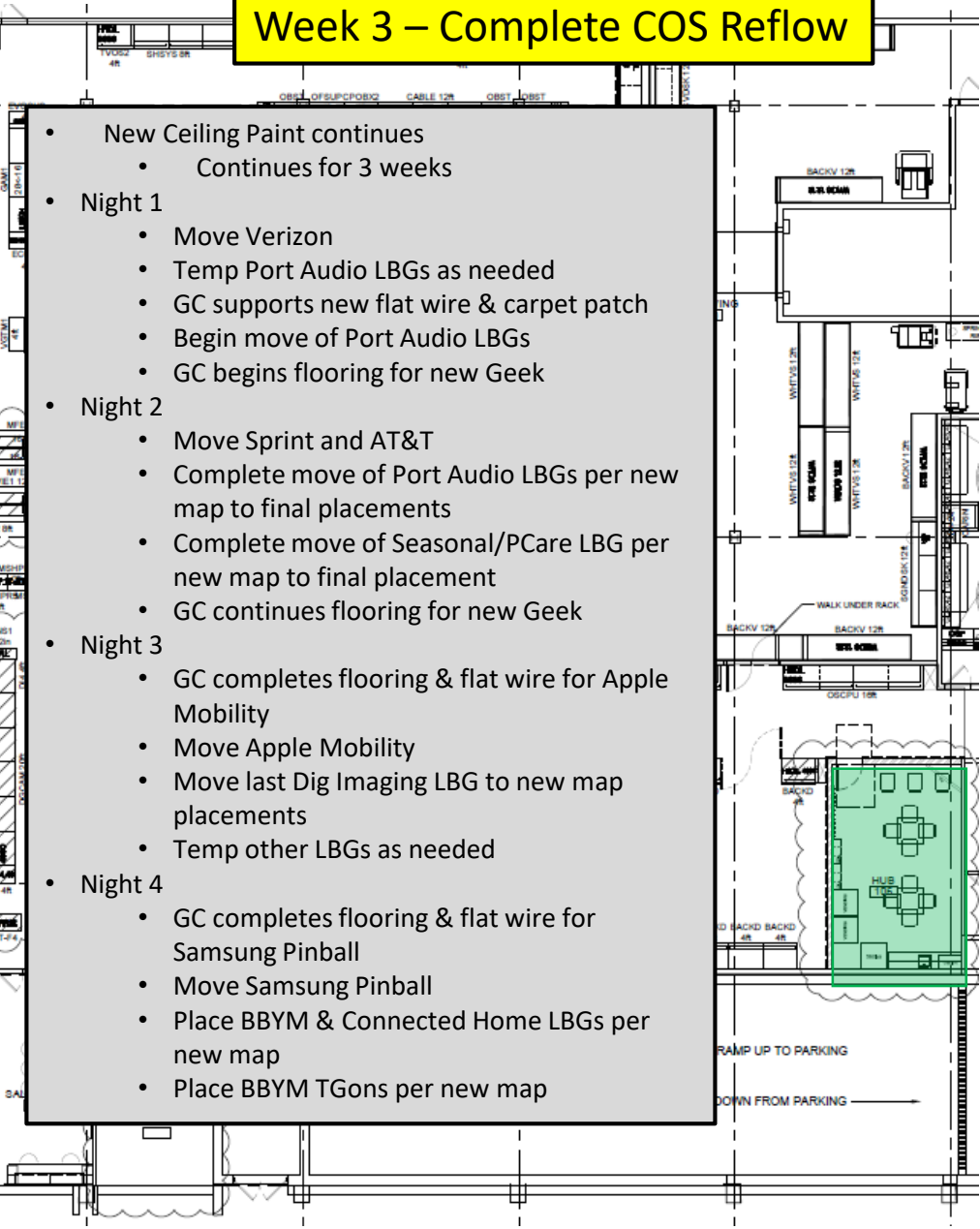
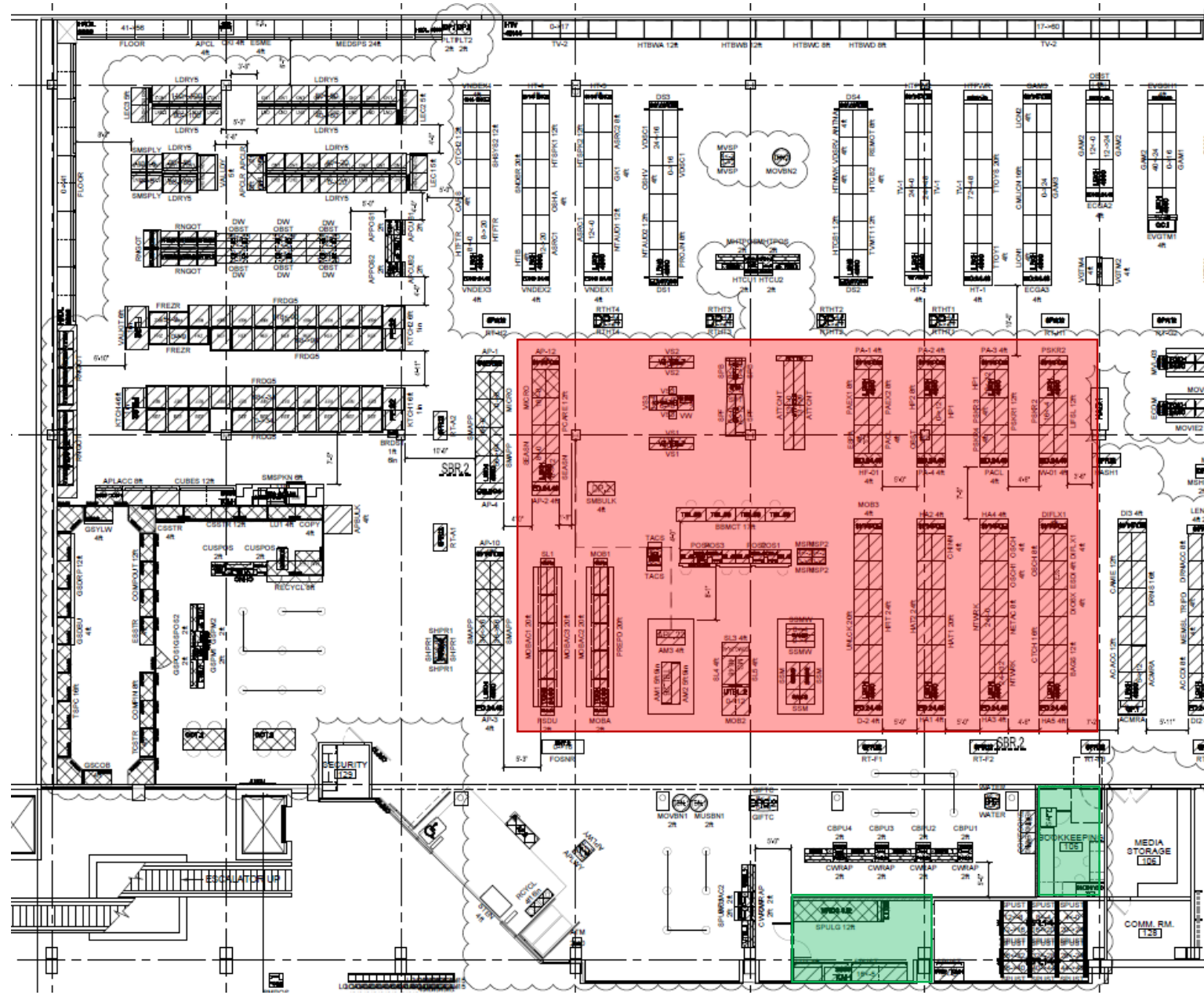
Week 2 – Begin COS Reflow

- New Ceiling Paint continues
 - Continues for 3 weeks
- **Night 1**
 - Move Dig Imaging LBGs to new map placement (NO plano reflow required)
 - Lengthen Unlocked LBG in BBYM
 - Set Bags on Half Gon taken from old FOH & place in temp location along wall outside SDR
 - Move HFIT to LBG w/Unlocked
 - Reflow Movies to T1 scope
- **Night 2**
 - Move Seasonal & PCare to open LBG created by HFIT move – lengthen LBG by 4ft.
 - Begin reflow of Port Audio planos across the four 3 section LBGs to the back left of BBYM



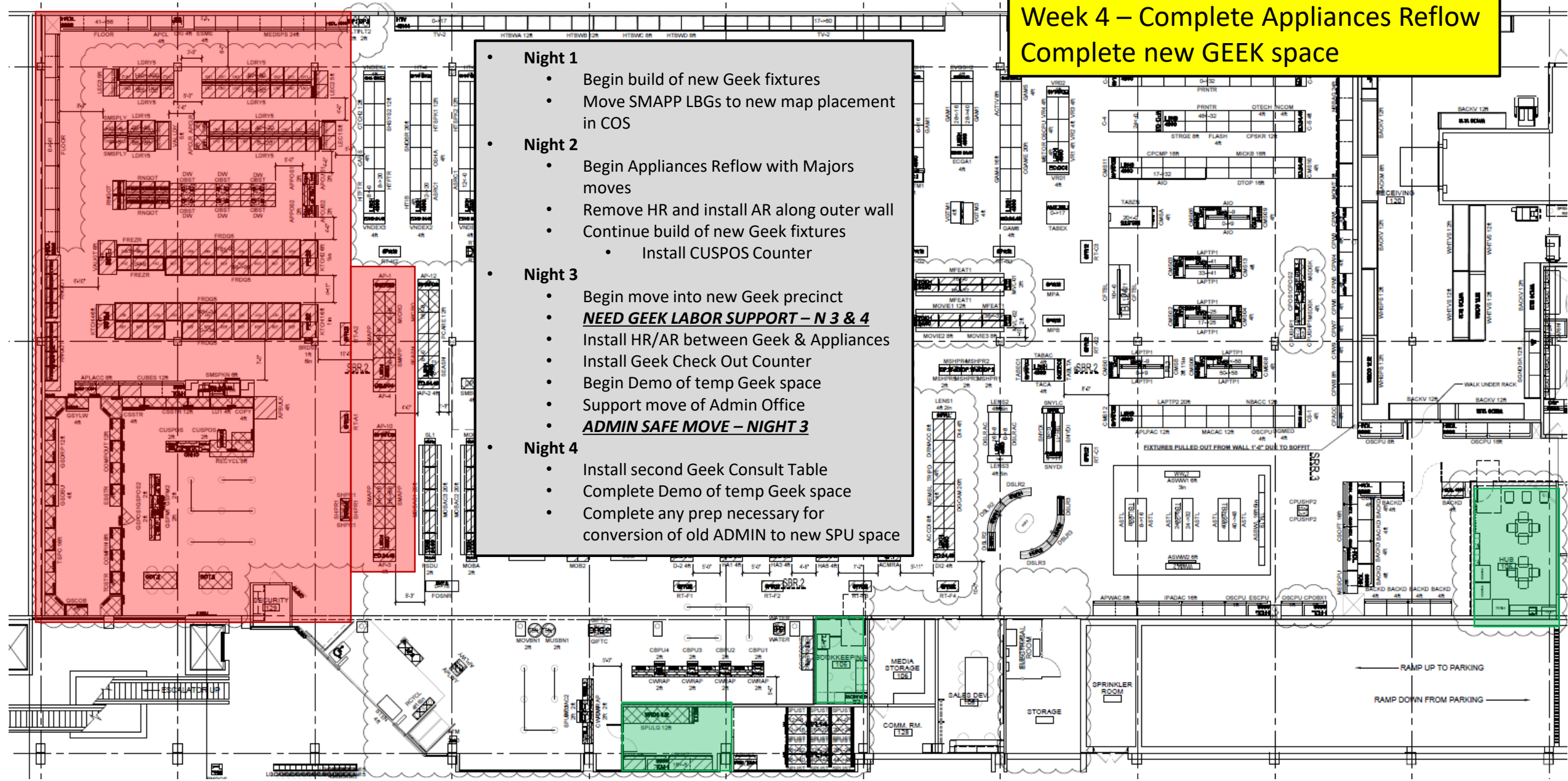
Week 3 – Complete COS Reflow

- New Ceiling Paint continues
 - Continues for 3 weeks
- Night 1
 - Move Verizon
 - Temp Port Audio LBGs as needed
 - GC supports new flat wire & carpet patch
 - Begin move of Port Audio LBGs
 - GC begins flooring for new Geek
- Night 2
 - Move Sprint and AT&T
 - Complete move of Port Audio LBGs per new map to final placements
 - Complete move of Seasonal/PCare LBG per new map to final placement
 - GC continues flooring for new Geek
- Night 3
 - GC completes flooring & flat wire for Apple Mobility
 - Move Apple Mobility
 - Move last Dig Imaging LBG to new map placements
 - Temp other LBGs as needed
- Night 4
 - GC completes flooring & flat wire for Samsung Pinball
 - Move Samsung Pinball
 - Place BBYM & Connected Home LBGs per new map
 - Place BBYM TGons per new map



**Week 4 – Complete Appliances Reflow
Complete new GEEK space**

- **Night 1**
 - Begin build of new Geek fixtures
 - Move SMAPP LBGs to new map placement in COS
- **Night 2**
 - Begin Appliances Reflow with Majors moves
 - Remove HR and install AR along outer wall
 - Continue build of new Geek fixtures
 - Install CUSPOS Counter
- **Night 3**
 - Begin move into new Geek precinct
 - **NEED GEEK LABOR SUPPORT – N 3 & 4**
 - Install HR/AR between Geek & Appliances
 - Install Geek Check Out Counter
 - Begin Demo of temp Geek space
 - Support move of Admin Office
 - **ADMIN SAFE MOVE – NIGHT 3**
- **Night 4**
 - Install second Geek Consult Table
 - Complete Demo of temp Geek space
 - Complete any prep necessary for conversion of old ADMIN to new SPU space



Week 5 – Complete SPU & Hub

- **Night 1**
 - Install new Check Out counters
 - Install reclaimed HR in SPU
 - Begin move of HUB – GC install of cabinets
- **Night 2**
 - Continue move of SPU into new space
 - Demo temp SPU space
 - Complete move of Hub
- **Night 3**
 - Complete move of SPU into new space
 - Install new SPU back of house fixtures
 - Install new SPU rolling racks
 - Install new SPU counters
- **Night 4**
 - General clean up & any remaining scope

